

ACCESSORIES

# MOUNTING BRACKET

**Dynapar™ brand**

## “L” Mounting Bracket

### Key Features

- Precision Machined Aluminum (6061-T6)
- Drilled and Tapped Where Required
- Mounting Hardware Included
- Encoder can be Mounted from Either Side
- Allows Servo-Ring Mount for Phasing Adjust



Encoder and coupling not included

## SPECIFICATIONS

### ORDERING INFORMATION

The mounting bracket may be used with the listed series encoders having the specified mounting configurations.

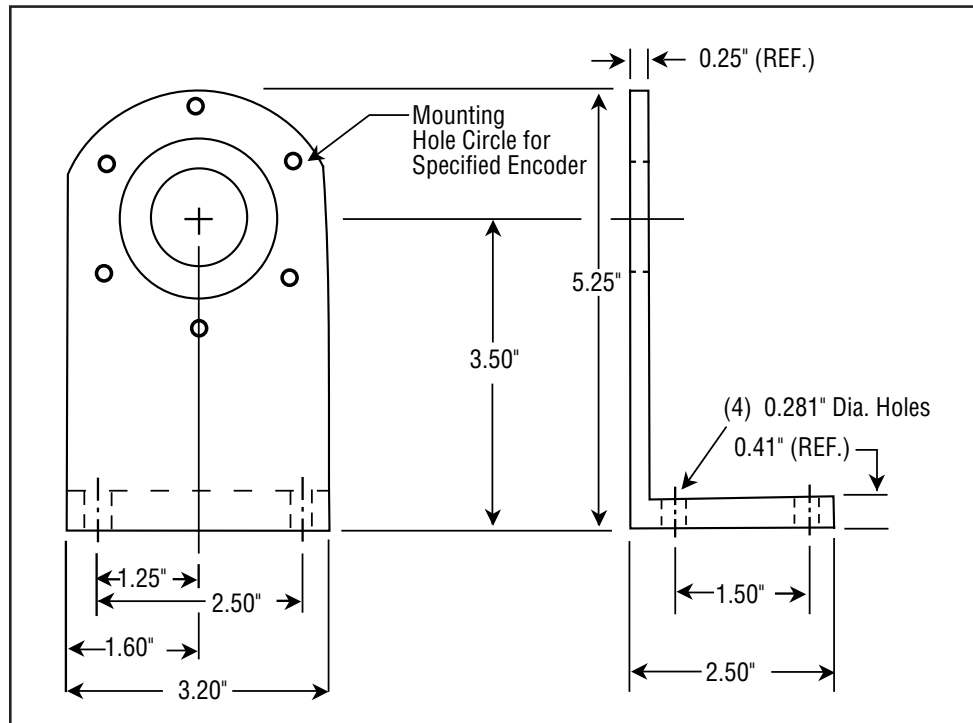
Bracket Model No.	Description	Compatible Encoder Series	Mounting Configuration
14005730000	Mounting Bracket for 60 Rotopulser and 2.5" Square or Servo Encoders	HA25, HC25, HR25, HD25, Hazardous Series HD25, HE25, IE25, HA725, H42, AI25, AR62/63, R25, RF25	2.5" Square Flange
		60 Rotopulser	2.5" Servo Flange (A and C Housings Only)
		HA25, HC25, HR25, HE25, IE25, AI25, R25	2.5" Servo Flange
108680-0001	Mounting Bracket for NEXGEN 22 Qube and 2.0" Square or Servo Encoders	H20, HE20, IE20, HD20, Hazardous Series HD20, NexGen 22 Qube (except metric)	2" Square Flange
		H20, HE20, IE20	Servo with a 1.25" Male Pilot
108680-0002	Mounting Bracket for 58mm Face Mount Encoders	H58, AI25, RI58-O	58mm Face Mount
		H58, AR62/63	36mm Pilot Mount

ACCESSORIES

# MOUNTING BRACKET



## DIMENSIONS



ACCESSORIES

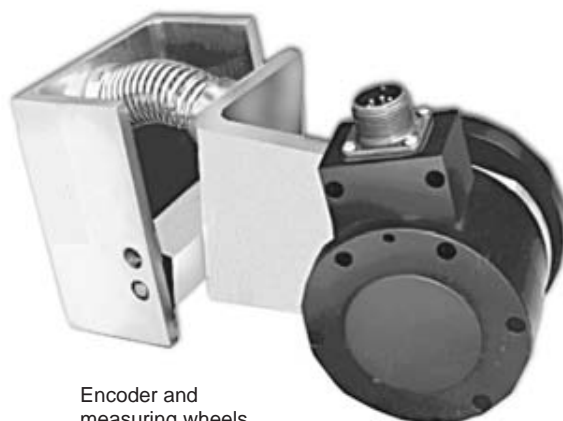
# PIVOT MOUNT

**Dynapar™ brand**

## Pivot Mounting Bracket

### Key Features

- Complete Pre-assembled Mounting System with Hardware Included
- Single or Dual Wheel uses Same Mount
- Easy Machine Attachment
- Built-in Spring Tension for Accurate Tracking



Encoder and measuring wheels not included

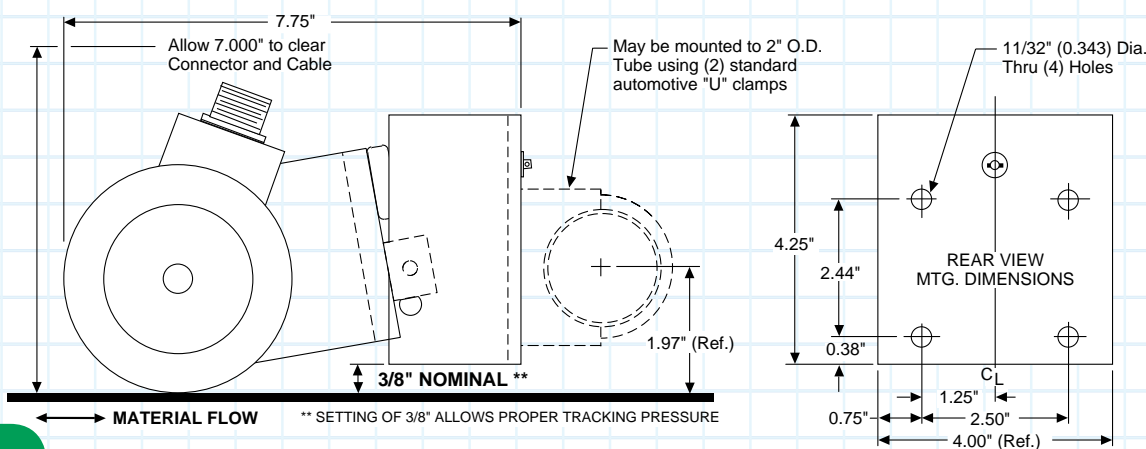
## SPECIFICATIONS

### ORDERING INFORMATION

The mounting bracket may be used with the listed series encoders having the specified mounting configurations.

Bracket Model No.	Description	Compatible Encoder Series	Mounting Configuration
14005740000	Pivot Mounting Bracket	HA25, HC25, HR25, HD25, Hazardous Series HD25, HE25, IE25, HA725, H42, AI25, AR62/63, R25, RF25	2.5" Square Flange
		60 Rotopulser	2.5" Servo Flange (A and C Housings Only)
		HA25, HC25, HR25, HE25, IE25, AI25, R25	2.5" Servo Flange

### DIMENSIONS



ACCESSORIES

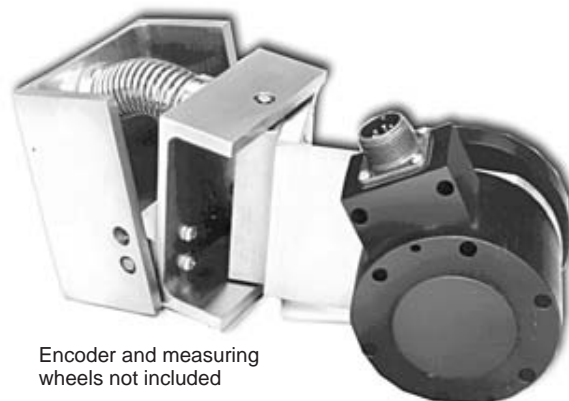
# UNIVERSAL MOUNT



## Universal Mounting Bracket

### Key Features

- Complete, Pre-assembled Mounting System with Hardware Included
- Single or Dual Wheel uses Same Mount
- Easy Machine Attachment
- Built-in Spring Tension with Two Degrees of Freedom for Accurate Tracking



Encoder and measuring wheels not included

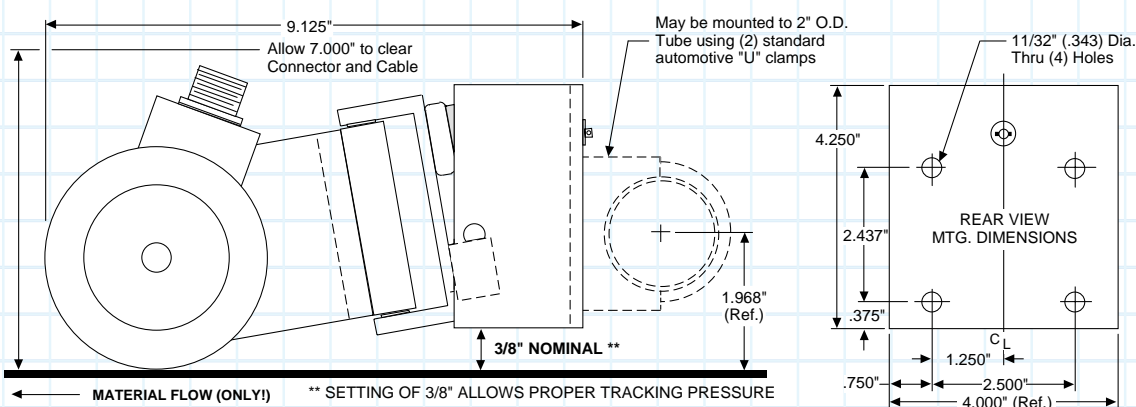
## SPECIFICATIONS

### ORDERING INFORMATION

The mounting bracket may be used with the listed series encoders having the specified mounting configurations.

Bracket Model No.	Description	Compatible Encoder Series	Mounting Configuration
14005750000	Universal Mounting Bracket	HA25, HC25, HR25, HD25, Hazardous Series HD25, HE25, IE25, HA725, H42, AI25, AR62/63, R25, RF25	2.5" Square Flange
		60 Rotopulser	2.5" Servo Flange (A and C Housings Only)
		HA25, HC25, HR25, HE25, IE25, AI25, R25	2.5" Servo Flange

### DIMENSIONS



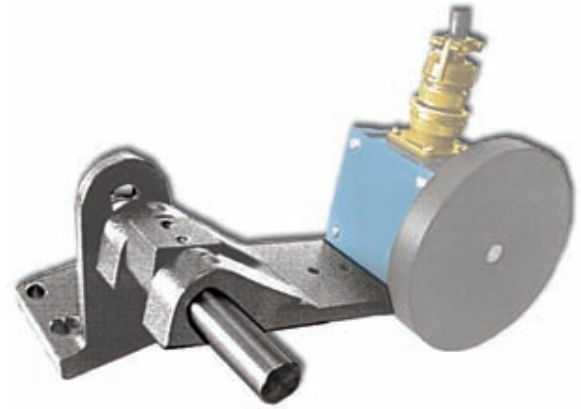
ACCESSORIES

# QUBE PIVOT MOUNT *Dynapar™ brand*

## Qube Pivot Mounting Bracket

### Key Features

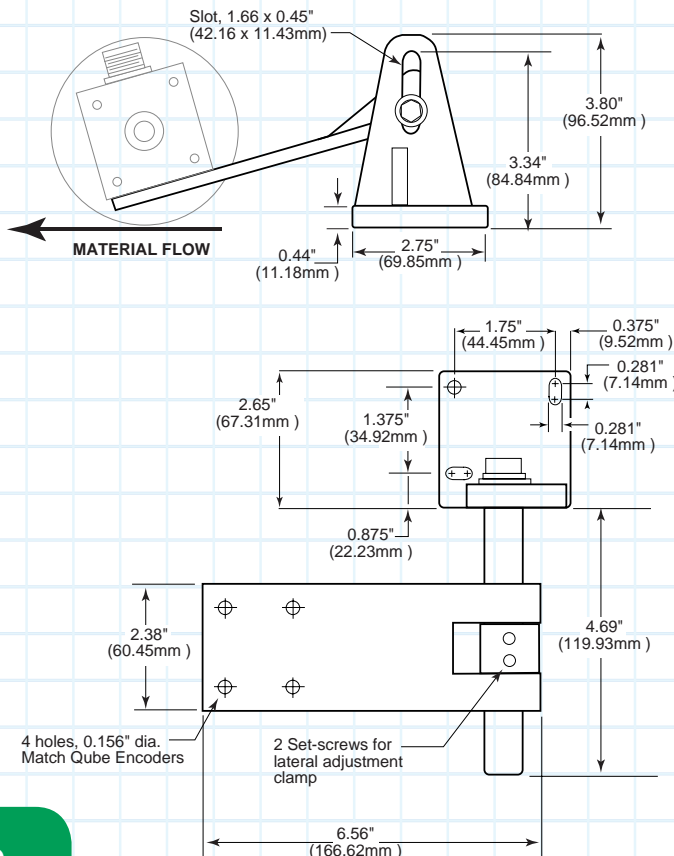
- Complete Mounting System with Hardware Included
- Single or Dual Wheel uses Same Mount
- Easy Machine Attachment
- Accepts NexGen 22 Qube Encoders



Encoder, cable and measuring wheels not included

## SPECIFICATIONS

### DIMENSIONS



### COMPATIBLE ENCODERS

Compatible with all NexGen 22 Qube Encoder Models

### ORDERING INFORMATION

Model No.	Description
111328-0001	Qube Pivot Mounting Base